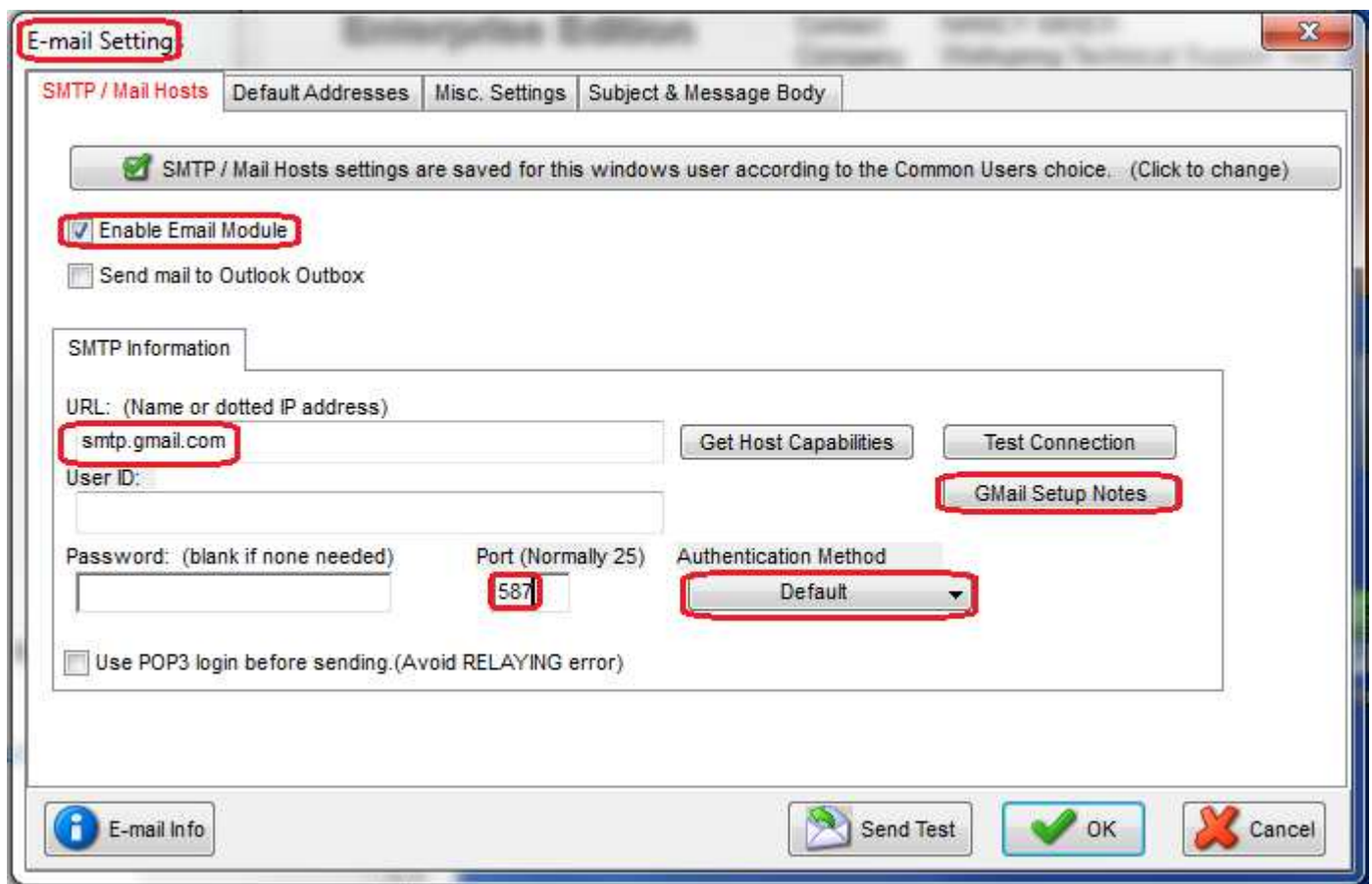


PrintBoss, version 6.0 and above has the ability to use Google Mail.

The setup is on the Options\Email Settings\SMTP/Mail Hosts tab.



#### Email Setting in PrintBoss:

SMTP URL: smtp.gmail.com

Port: 587

UserID: your\_email@gmail.com (NOTE: Authentication Method must be set to "Default" to edit this field)

Password: your\_password

Authentication Method: Default

Use POP3 login before sending: UNCHECKED

### **GMail settings on Google's server:**

Log in to <http://mail.google.com/>

In the upper right you will see your email address along with a small drop-down arrow. Click the arrow and then click "Account".

NOTE: If you have **Google+** the link is nowhere to be found so go to <https://www.google.com/settings/security/lesssecureapps> to make the changes noted below:

Click on "Security" from the choices at the top of this page.

In the "Account Permissions" section in the lower left click on the "Settings" link next to the "Less secure apps" caption.

Click "Enable" and then the "Done" button.